

Light from the Cross is Beaming

"For God, who commanded the light to shine out of darkness, hath shined in our hearts, to give the light of the knowledge of the glory of God in the face of Jesus Christ." — II Corinthians 4:6

Words and Harmony by the
1958 Harmony Class of the Dallas Normal Music School

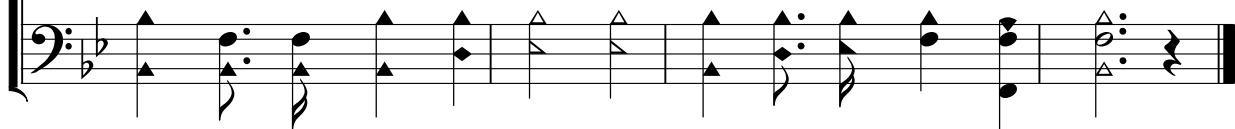
Melody by
Tillit S. Teddlie 1958



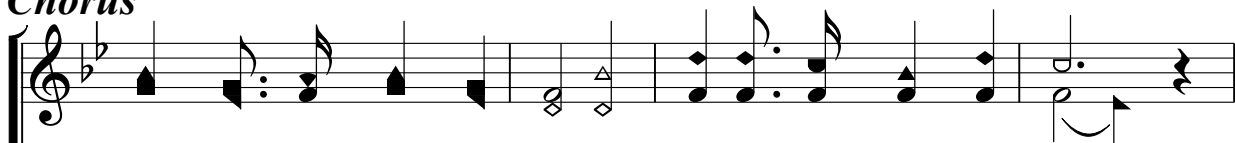
1. Light from the cross is beam - ing O - ver the world to - day;
2. Love from the cross is stream - ing, Flood - ing the way with light,
3. Hope from the cross is gleam - ing O - ver the nar - row way;



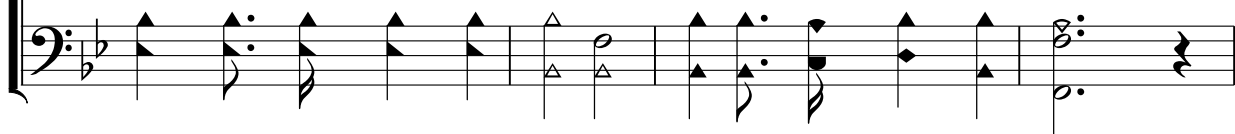
Hope to the lost 'tis bring - ing, Joy to the pil - grim's way!
Dark - ness and doubt dis - pel - ing, Leav - ing the path - way bright!
Life to the lost is bring - ing Joy to the world to - day!



Chorus



Light that will shine for - ev - er In - to the hearts of men,



Guid - ing our steps to Heav - en, Safe from the storms of sin.

